

TROY VALVE

T I M E S

VOL. 23 | APRIL 2022

What's New at Troy Valve?

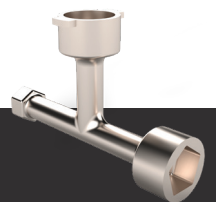
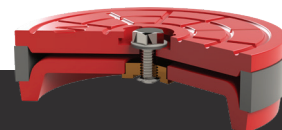
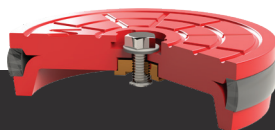
There's always something new at Troy Valve. Here's the latest scoop!

As always, the wheels keep turning and things keep changing. If you have visited our website recently, you have noticed some changes. We have added a few new products that will be available soon. The first being a new, lightweight, stainless steel stem guide. We also have a ground level position indicating floor/valve box with a telescoping extension stem built in, which is perfect for projects where exact depth is unknown. Finally, we added the sealing lid for floor/valve box. If you haven't already done so, check out our website to learn more about these exciting new products.

Some big news at Troy Valve is that we are updating all our patterns for our castings. This upgrade will result in better, more consistent castings. We have also used this opportunity to make a few subtle design changes, which will not affect interchangeability with current products.

We are also very close to revealing a useful tool for end users who are visiting our website - a distributor and factory representative map. This will help the end users quickly find someone near them to contact for pricing.

Finally, I am sure by now everyone has noticed the rising costs of just about everything in the world. The rising costs of raw materials, labor, and fuel have made controlling costs a daunting task. We have, and will continue, to do everything we can to keep the impact on our customers as low as possible. Thank you for your continued support.



Product Spotlight

Sealing Valve Box/Floor Box Lid (Coming Soon)

The Sealing Floor Box Lid is designed to keep water, dirt, bugs, and gasses from getting in or out of your valve box. With its lock-in-place feature and compression seal, you never have to worry about keeping everything in your valve box safe, clean, and dry.

▶ Employee Recognition Corner



Lindsey Radney Painter

How long have you worked at Penn-Troy?

6 months

What is your position and common daily duties?

Painter, but I also help with machines sometimes.

What do you like most about your job?

I love being able to do something I enjoy every day.

What are your hobbies?

Hunting and looking for shed antlers

Do you have a vacation ritual or location?

We go to the beach a lot but lately Benezette, PA is a new spot.

What is your favorite movie?

Grown Ups

Any bucket list item(s) you care to share?

To go to Hawaii

Do you have any hidden talents?

No

Family?

I have two dogs. Sadie and Lucy.

How do you unwind outside of work?

I take my dogs shed hunting with Kyle and his dogs, Dixie, and Duke.

▶ A Message from the President

Welcome once again to the *Troy Valve Times*.

Spring is in the air here in Troy, Pennsylvania. The trees are budding, the streams are high, and the birds are building nests. The truth is the birds have been here for a while now, long before I ever considered it to be spring time. Some mornings I'd see them out in the snow hunting for worms. I sometimes wondered why they wouldn't just take a couple more weeks down south in the warmth. I know I certainly would if I were a bird. I go on to assume that mother nature has a strict schedule, and birds are more concerned with feeding, nesting, and reproducing, rather than their own personal comfort. Then it dawned on me that we are not so different than the birds. These past winter months when business is traditionally slower, Penn-Troy has been ordering in large quantities of materials and building stock so that we can be ready when the warmer months hit. It always feels counterintuitive to be buying more materials and making more product when business is slow, but just like mother nature, our industry has its own schedule, and we must be ready. As the workload increases these warmer months, I hope you look to Troy Valve for your valve requirements. We have stock, and I can assure you, we will be ready to serve you.



Sincerely,

Mark Powers

Mark Powers

President and Chief Executive Officer

Cell: 607-742-2746 | Toll Free: 800-232-4442

MANUFACTURING TRUST.

Drop us a line...

Questions? Comments? If you would like to give Troy Valve any feedback, please send an email to sales@penntroy.com. Your feedback helps us know when we are on the right track, and where we need to refocus.