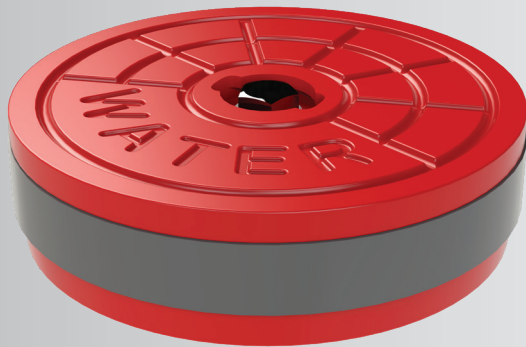
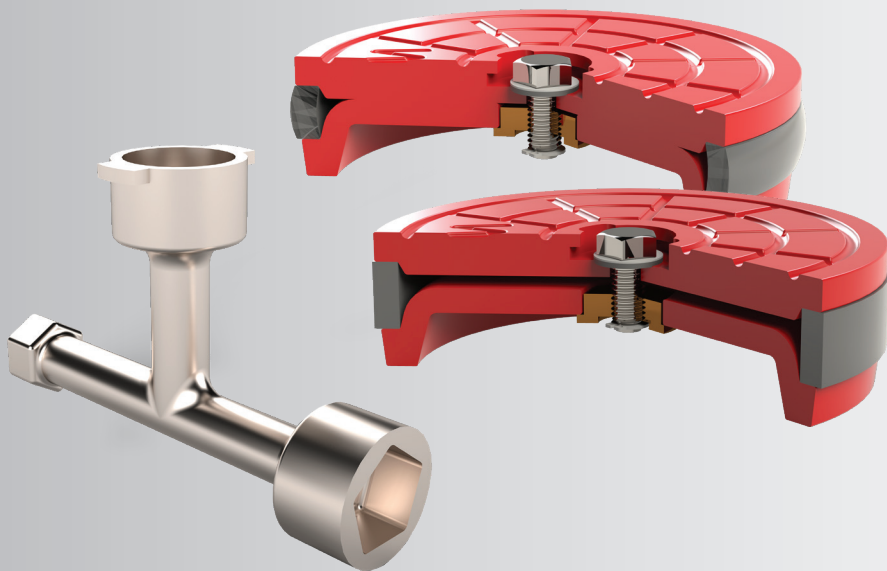


Sealing Valve Box/Floorbox Lid

Impermeable Compression Seal



The Sealing Floorbox Lid is designed to keep water, dirt, bugs, and gasses from getting in or out of your valve box. With its lock-in-place feature and compression seal, you never have to worry about keeping everything in your valve box safe, clean, and dry.



PRODUCT FEATURES

1. Locks in place
2. Single-bolt locking mechanism
3. No locking legs, which allows the most clearance of any locking lid on the market.
4. Made to fit 5 1/4 valve boxes and 4 7/8 floor boxes.

800.232.4442
sales@troyvalve.com



MADE IN THE USA

Application Notes

A Sealing Floor box Lid locks the compression seal in place to keep all water, dirt, bugs, and gasses from getting in or out of the valve box. The cast in lip allows operators to easily lift the lid out of the valve box, making the need to dislodge the lid with a screwdriver from the inside obsolete.

The simplicity of the lid's locking mechanism is matched by its strength. Its load-bearing design prevents cracking, bending, and breaking when vehicles of various weights are driving over it. Additionally, the Sealing Floorbox Lid is aesthetically customizable to maintain uniformity and adhere to city requirements.

Sealing Valve Box/Floor Box Lid

AIS Compliant / Domestic

FEATURE	BENEFIT
Locks in place.	Keeps lid from dislodging.
Simple locking mechanism.	Allows operator to quickly and easily lock or unlock with single-bolt turn.
Compression seal.	Keeps water, dirt, bugs, and gasses from getting in or out of valve box.
Load bearing.	Will not crack, bend, or break due to vehicles driving over it.
Small vertical footprint.	Allows the operating nut to be placed at an elevation higher than boxes using locking legs.
Cast in lip for lid removal.	Allows operator to easily lift lid out of valve box.
Custom tool for removal available. <i>Sold separately.</i>	Makes removal even easier.
Available in standard sizes for water, sewer, or gas.	Allows interchangeability with existing valve boxes.
Customizable aesthetics.	Adhere to city requirements and maintain uniform aesthetic.



www.troyvalve.com