

What's New at Troy Valve?

There's always something new at Troy Valve. Here's the latest scoop!

Fall has arrived and the trees are getting close to their peak colors in the Troy area. This time of year is looked forward to by so many around the country for various reasons. Some like fall for the sports like MLB playoffs, or pro, college and high school football, not to mention the beginning of the NBA and NHL seasons. Some like it because the weather cools and brings with it sweatshirts and beloved family traditions like apple picking and campfires with hot apple cider. Still others love the fall décor like pumpkins, corn stalks, and preparing for the holidays. Here at Troy Valve we have a lot we are looking forward to. Here are a few of the things we have been up to and what we have planned for the coming months.

Increased Inventory Space

We have moved an assembly area from the 2nd floor to a large staging area on the 3rd floor. We are using the newly created space on the 2nd floor for increased inventory space for Troy Valve products, helping us cut lead times and be better organized.

WEFTEC 2016

Troy Valve would like to thank everyone that took the time to stop by our booth in New Orleans a few short weeks ago. WEFTEC® was a success yet again and was the place to be for the latest product and industry information. We had a bigger booth this year which allowed us to display more products than we have in the past. We were especially happy to display our new position indicator and it was met with positive feedback throughout the show from multiple groups of people, from reps and distributors to engineers and operators.

If you weren't at the show, or just didn't get a chance to stop by, feel free to contact us by phone (570-297-4442), email (sales@troyvalve.com), or visit our website at www.troyvalve.com.

NSF/ANSI 61 Approval

Quality Association® and we are excited to announce that our cast 316 stainless steel mud valves are now NSF/ANSI 61, 372 approved. What does this mean, you ask? The testing performed determines what contaminates may migrate or leach from products into water. This is especially important when products are placed in drinking water. With recent developments of lead showing up in drinking water around the country, it's important to not only understand this standard, but to make sure your products are NSF/ANSI 61, 372 approved for use in drinking water. Furthermore, that they are tested to the temperatures they will see when used in their respective systems. Our products are tested to the Domestic Hot Standard which covers our mud valves for use in water that may reach temperatures all the way up to 140 +/- 4 degrees Fahrenheit. For more information on this standard and the testing, please visit our website www.troyvalve.com and read our NSF/ANSI 61 whitepaper in the [resources tab](#).



▶ Employee Recognition Corner



Mark Morgan Machinist

How long have you worked at Penn-Troy?
19 years

What are some common duties associated with your job?
Operating, programming, and set up on CNC lathes.

What do you like most about your job?
Flexibility. With kids, it's nice to be able to help them when someone needs me.

What are your hobbies?
Hunting, camping, and tractor pulls.

Do you have a vacation tradition?
Camping at tractor shows.

What is your favorite music?
Oldies and Country.

Do you have any hidden talents?
Sure do! But if I told you they wouldn't be hidden anymore.

Family?
Married for 16 years. We have two boys.

How do you unwind outside of work?
I like to walk in the woods.

▶ Product Spotlight

Valve Position Indicator

The solution to your valve position puzzle is here! In the last issue of the Troy Valve Times we showed our new valve position indicator, and we were proud to show it off at WEFTEC this year. Your feedback was overwhelmingly positive and that is why this spotlight is focusing on this exciting new product. With this all new position indicator, users never need to struggle to count hash marks or estimate valve position. The unique digital readout lets you know precisely how many turns you have made...right down to the tenth of a turn. A tag applied at the factory tells you how many turns to full open, making determining valve position simple. Another distinctive feature of our indicator is that it can be used on any valve, just simply change the tag to match your valve's turns to open and go. Able to indicate up to 9,999 turns, we have encased this already rugged indicator in a custom water resistant jacket for added protection from the elements. So whether it's in a floor box, valve box, or even on a stem guide, you can count (literally) on this one of a kind indicator to keep you aware of valve position.



MADE IN THE USA

▶ A Message From the President

Thank you again for taking the time to read Troy Valve's quarterly newsletter. There is no doubt that everyone has seen on the news all the concerns with lead in the drinking water. In doing our part, Troy Valve is proud to announce that our stainless steel mud valves have just gained NSF/ANSI 61, 372 certification. These certifications ensure that they are safe for drinking water, and do not contain lead, respectively. Also, please take time to read about our new valve position indicator. With its mechanical digital readout, it eliminates any guessing when opening or closing a valve. Once again, I wish you all the best in your upcoming quarter, and always look forward to hearing from you about how we can serve you better.

Sincerely,

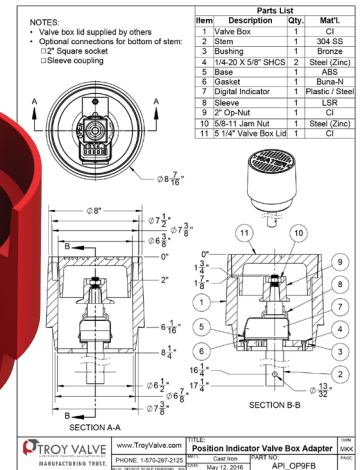
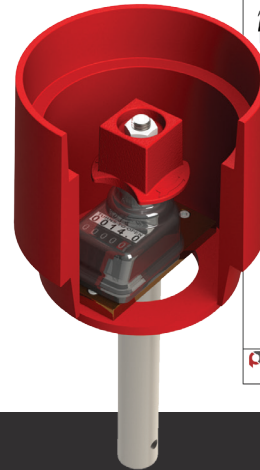
Mark Powers

Mark Powers
President and Chief Executive Officer



▶ Volume 3 Contest Update

In Volume 3 of the Troy Valve Times, we asked our readers to help us name our new valve position indicator. We have read through the entries and enjoyed the suggestions we received and we would like to thank you for all the responses. We are still considering the entries and they continue to trickle in and we have yet to pick a winner. Check future issues for more updates, and if you think you have a good name, send it in.



▶ Volume 4 Contest

Once again, I would invite our readers to send in pictures or videos of our products installed or on job sites ready for installation. There is no need for the products to even be recently installed. Anything will do. We will not share who chose to participate in the contest in future issues, only pictures. And each person that sends in a picture or video will receive a token of our appreciation. In the past we have sent local gourmet popcorn, Pennsylvania pure maple syrup, and local honey just to name a few. So, let's see what you've got! Send entries to: todd@troyvalve.com

Weftec 2016, Left to right, Dolly, Todd, Kim, Mark



Cast stainless steel mud valves on the shipping dock

Weftec 2016 booth



30 inch NRS Mud Valve ready for shipment

Custom Telescoping Valve

