

## What's New at Troy Valve?

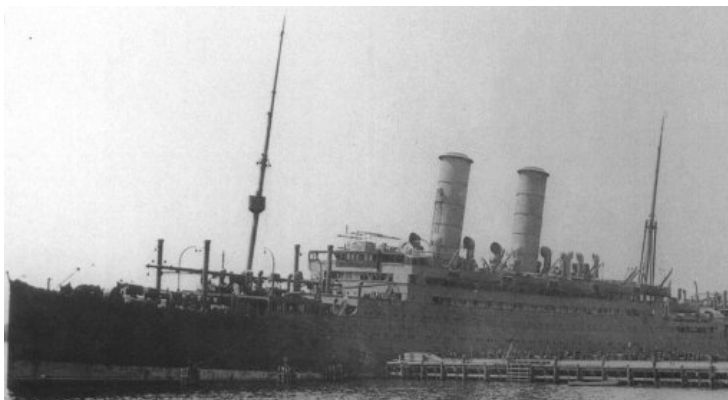
**There's always something new at Troy Valve. Here's the latest scoop!**

As spring slowly makes its way to northeastern Pennsylvania, we are quickly expanding capabilities. Last year, we added two new machines and now we have added the capability of electrochemical passivating welds in house. We also have teamed up with a local group to offer passivation to meet ASTM A380, ASTM A967, and AMS 2700 requirements. We also upgraded one of our lathes. This will allow us to hold tolerances better when making extension stems, boring bushings and couplings, among other things.

Looking ahead for this year, we have quite a few shop improvements planned, so keep an eye out for that progress in future issues. We will also be attending WEFTEC 2018 in New Orleans later this year. That is always a great opportunity for us to showcase new or improved products so please plan on stopping by our booth to see us. You can always let us know ahead of time if you would like to meet with us after the show for dinner, or at your location or ours. We look forward to hearing from you.

### 100 Years Ago...

Recently, I noticed something of interest in one of the local newspapers' "looking back" sections. This section highlights the things that have happened in our area or that had impact in our area in the past.



Almost exactly 100 years ago, a liner called the Tuscania was torpedoed by a German U-boat off the coast of Ireland on February 5, 1918. At that time, our factory manufactured steam engines and generators. The ship that was sunk that day was carrying five Troy Enberg steam engines that were heading to France where they were to be used by the French forestry service.

There were 2,397 souls on board when the liner was struck; 230 were lost with the ship and it is estimated that 201 of those were American troops.



### Troy Valve Educates Local School Students on Manufacturing Opportunities

Our local school district recently put together their first annual career fair for students in grades 6, 8, and 11. There were a number of different trades present for the students to learn about. Troy Valve represented the manufacturing trade. President Mark Powers, along with Merle Eiffert from our engineering department, demonstrated the function of a telescoping valve and spoke to the students about the various opportunities available in the manufacturing field.

"We met many kids with families from both past and present generations who are—or were—Penn Troy employees. The kids were interested to see what our company does because they all know the prominent building downtown. Many said they wanted to be welders or simply work with their hands, so it was fun to tell them how those skills relate to what we do. It was very rewarding to see how the company has contributed to our town," said Powers.

# ▶ Employee Recognition Corner



## Mike Kafka Mechanical Engineer

### How long have you worked at Penn-Troy?

Six years

### What is your position and common daily duties?

Lead Mechanical Engineer. Primary duties include:

- Product design and development
- Project management
- Testing prototypes
- Designing test and assembly equipment
- CAD and FEA
- Product data management
- Working directly with customers to meet their unique design needs

### What do you like most about your job?

Problem solving, traveling to work face to face with customers, and seeing projects through from design to production.

### What are your hobbies?

Playing guitar, ukulele, and harmonica. Speed solving various Rubik's cubes. Mobile gaming.

### Do you have a vacation ritual or location?

Going to the beach in NJ. As a child I would go camping every summer in the Adirondacks. I hope to revive this tradition with my family as well.

### What is your favorite movie?

*Inception / Dumb and Dumber*

### Any bucket list item(s) you care to share?

A couple places I would like to travel to include Australia, U.K., Hawaii, Japan. I can't pick just one.

### Do you have any hidden talents?

I can ride a unicycle and juggle. I have also trained in Judo, Krav Maga, and Brazilian Jujitsu.

### Family?

Married for 8 years to my amazing wife Louise, whom I met in college in an ultimate Frisbee league. We have 3 beautiful girls (7, 5, and 3), 2 dogs, 2 cats, 2 rabbits, and 2 guinea pigs.

### How do you unwind outside of work?

Playing my instruments, watching movies (especially Marvel and Star Wars), and learning new things.

## Product Spotlight



MADE IN THE USA

### Extension Stems

Did you know that Troy Valve can supply extension stems for virtually any valve, at any length, and of almost any material? We stock a variety of diameters and materials to accommodate the needs of all our customers in a hurry. We have a large assortment of operators to choose from, also. So, if it's a two-inch operating nut, a hand wheel, a key way or anything in between, we probably have it and have done it...with a u-joint even. So, if it's steel, 304 stainless, 316 stainless, or even galvanized pipe or solid rod, we can take care of you.



# ▶ A Message From the President



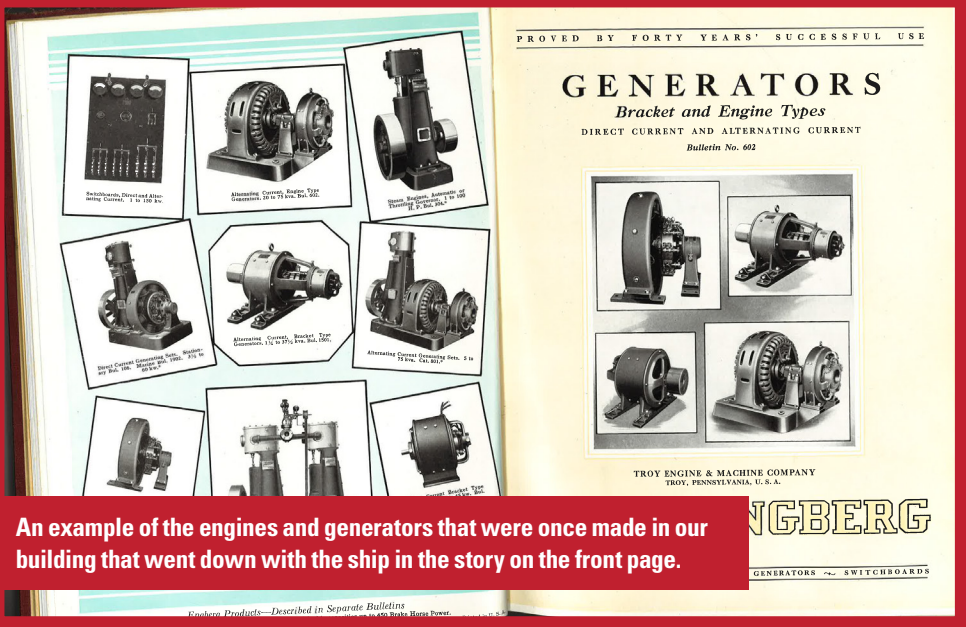
Welcome to the Troy Valve Times. I hope that wherever you are, it is starting to feel like spring. Here in Troy, it's cold. It is always a struggle for me to think of spring as flowers, sun, and rebirth, when most days its rain, mud, and clouds. What gives me hope is that I actually see flowers starting to come out of the ground in my flower bed. It reminds me of the saying that you should "bloom where you're planted." There's no doubt that someday I wish I lived a little closer to the equator, but Troy is my home, and it is the place where I am engaged. I am grateful to be in an industry that has such a positive role to play in the world. And most of all, I am grateful for the trust our customers put in us to deliver on their important projects. While I feel very confident I'll see another snow here in Troy before the warmth is here to stay, I also know that the weather will not stop us from serving you. Happy Spring to you all.

Sincerely,

*Mark Powers*

Mark Powers  
President and Chief Executive Officer  
Cell: 607-742-2746 | Toll Free: 800-232-4442





An example of the engines and generators that were once made in our building that went down with the ship in the story on the front page.

**NGBERG**  
GENERATORS & SWITCHBOARDS



4-inch sluce gate bodies in process



Cast stainless steel mud valves tagged and ready for shipment



4-inch 316 stainless steel floor type PRVs awaiting lids



Ductile iron floor stand mounting brackets



Extra long ductile iron stem guides