

DIMENSIONS ARE IN INCHES

Size	3	4	6	8	10	12	16
A	10 1/8	10 1/8	12 3/16	15	17 5/8	20 3/16	26
B	31/32	31/32	1 1/16	1 1/4	1 9/32	1 3/8	1 1/4
C	12 15/16	12 15/16	14 3/16	18 5/8	21 19/32	22 9/16	
D	3/4	3/4	7/8	7/8	1	1	1 1/8
E	4	6	6	8	8	10	14
F	6	7 1/2	9 1/2	11 3/4	14 1/4	17	21 1/4
G	22	22	27	32	45	52	
H	3/8	3/8	7/16	9/16	19/32	5/8	1/2
J	3 13/16	3 13/16	4 5/8	6 13/32	9	10 1/2	

Item	Description	QTY.	MAT'L
1	Frame	1	316SS
2	Yoke	1	316SS
3	HHCS	4	316SS
4	Plug	1	316SS
5	Resilient Seat	1	*BUNA-N
6	Stem	1	316SS
7	Stem Cap	1	316SS
8	HHCS	2	316SS

* 6" and up, 3" and 4" are assembled with EPDM seats

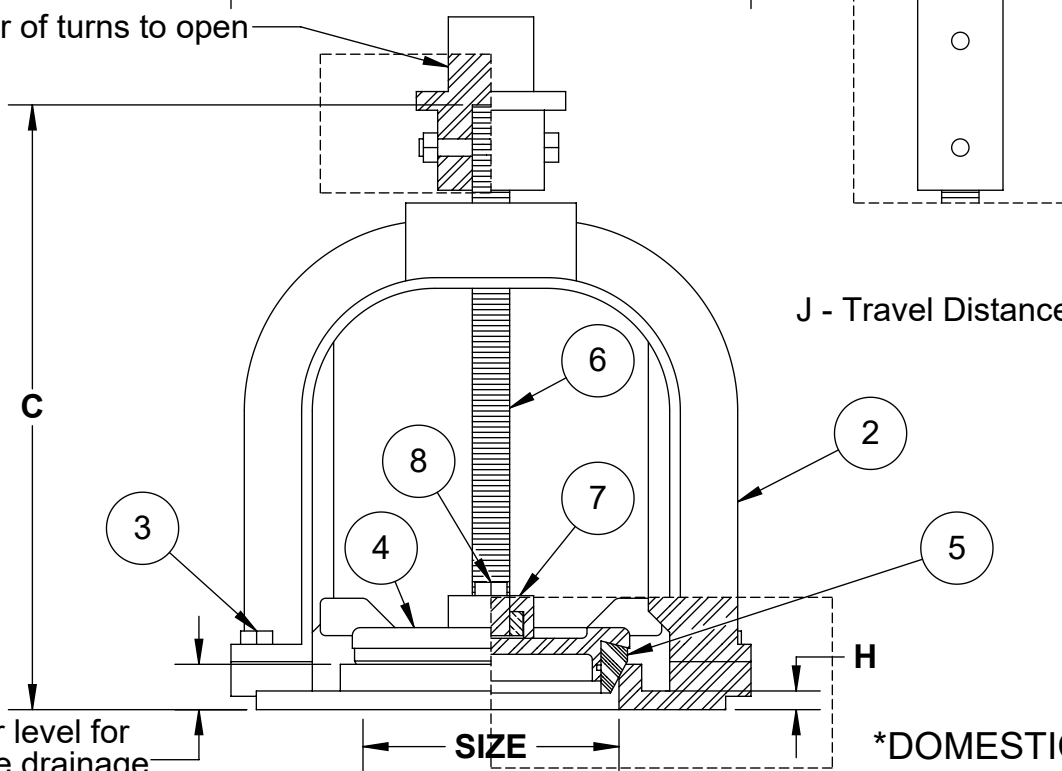
Notes:

- Bubble tight resilient-to-stainless steel seating
- Open left
- Valve Flange must be level for proper operation
- Rotation of Stem Cap may vary per size
- 125# ANSI flange
 - Only the number of holes specified in the chart are used

Ø F - Bolt Circle Diameter

1

G - Number of turns to open



D - Hole Diameter
E - Number of Holes Used

OPERATOR

- 2" OP. NUT
- SLEEVE COUPLING FOR EXTENSION STEM

J - Travel Distance

B - Floor level for complete drainage

DOMESTIC



www.TroyValve.com

PHONE: 1-570-297-2125

187- DO NOT SCALE DRAWING

TITLE: **SS Mud Valve - Rising Stem 3-16"**

MAT'L: SS

DATE: 6/26/2020

PART NO: USA25612RCSSA

DWN. TE

PAGE: