

**DIMENSIONS ARE IN INCHES**

Size	3	4	6	8	10	12	16	18
A	10 1/8	10 1/8	12 5/16	15	17 5/8	20 3/16	25 5/16	28 1/4
B	15/16	15/16	1	1 1/8	1 3/16	1 1/4	1 7/16	1 9/16
C	14 11/16	14 11/16	16 3/8	19 5/16	22 7/8	24 3/4	29 13/16	32 7/16
D	5 1/4	5 1/4	6 11/16	9 3/16	11 3/4	13 1/8	17	18 1/4
E	3/4	3/4	7/8	7/8	1	1	1 1/8	1 1/4
F	4	6	6	8	8	10	14	14
G	6	7 1/2	9 1/2	11 3/4	14 1/4	17	21 1/4	22 3/4

**Parts List**

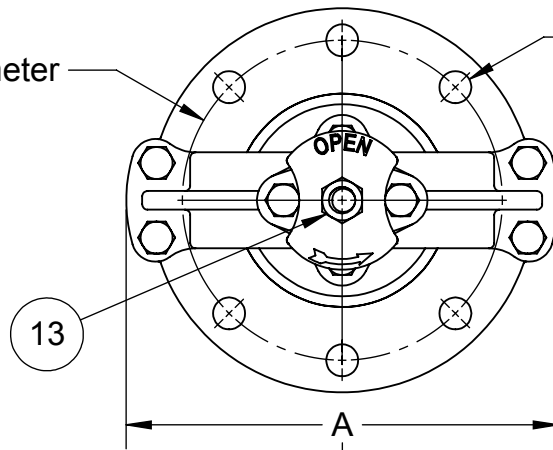
Item	Description	Qty.	Mat'l.
1	Frame	1	CI - A126
2	Seat Ring	1	Bronze
3	Plug	1	CI - A126
4	Resilient Seat	1	Buna-N
5	Stem	1	Brass*
6	Stem Cap	1	CI - A126
7	HHCS	2	SS
8	Yoke	1	CI - A126
9	HHCS	4	SS
10	Thrust Nut	1	Bronze
11	HHCS	2	SS
12	2" Wrench Nut	1	CI - A126
13	Jam Nut	1	SS

**Notes:**

- 2 Part Epoxy Coating
- 16" & 18" Valves have a magn. brz. stem
- 3" valve comes with both 3" and 4" mounting pattern
- Bubble tight resilient-to-bronze seating
- Open left
- Valve Flanges must be level for proper operation
- 125# ANSI flange
  - Only the number of holes specified in the chart are used

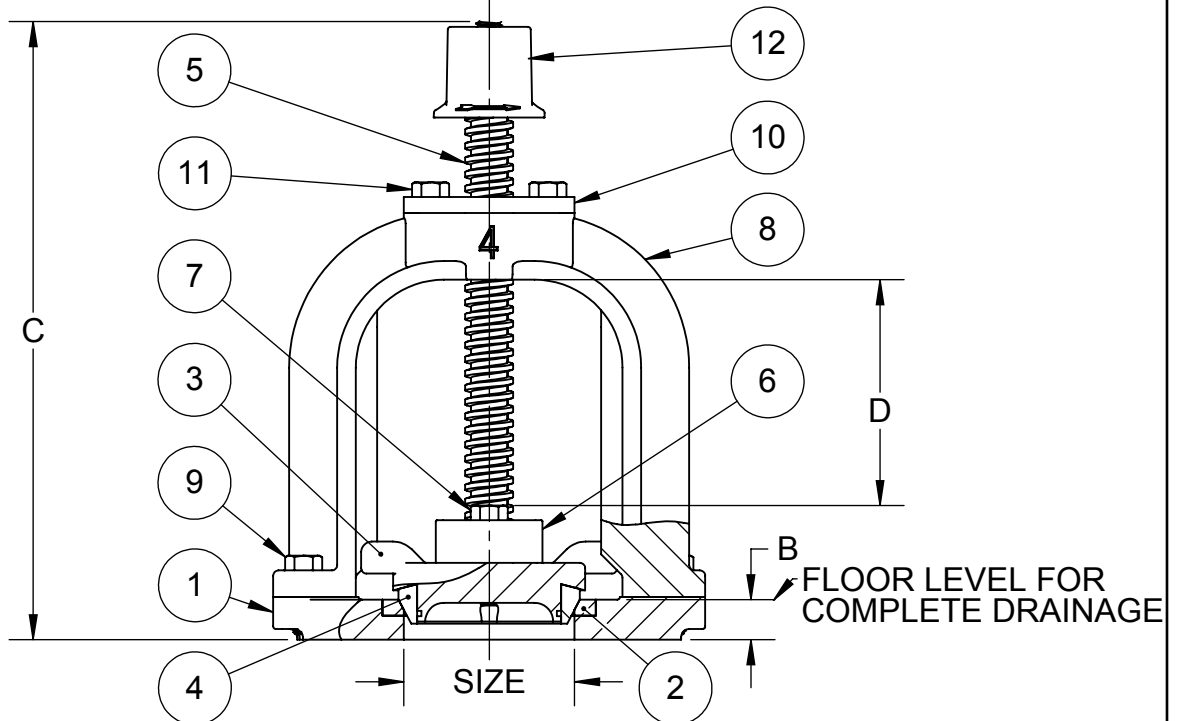
Ø G - Bolt Circle Diameter

Ø E - Hole Diameter  
F - Number of Holes Used



**OPERATOR:**

- 2" WRENCH NUT
- YOKE COUPLING FOR EXTENSION STEM



www.TroyValve.com

PHONE: 1-570-297-2125

014-04 DO NOT SCALE DRAWING 2016

TITLE:

**Rising Stem Mud Valve**

MAT'L: Cast Iron

DATE: Aug 29, 2017

PART NO:

**A25612RB**

DWN.

CAC

PAGE: