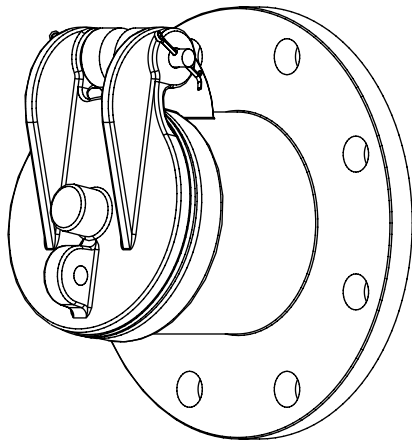
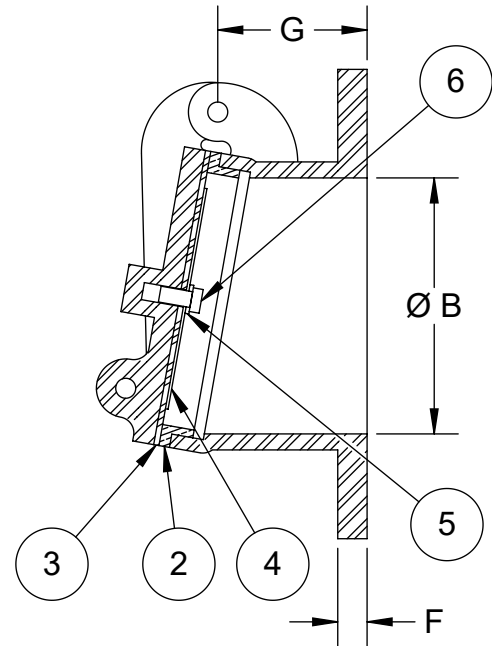
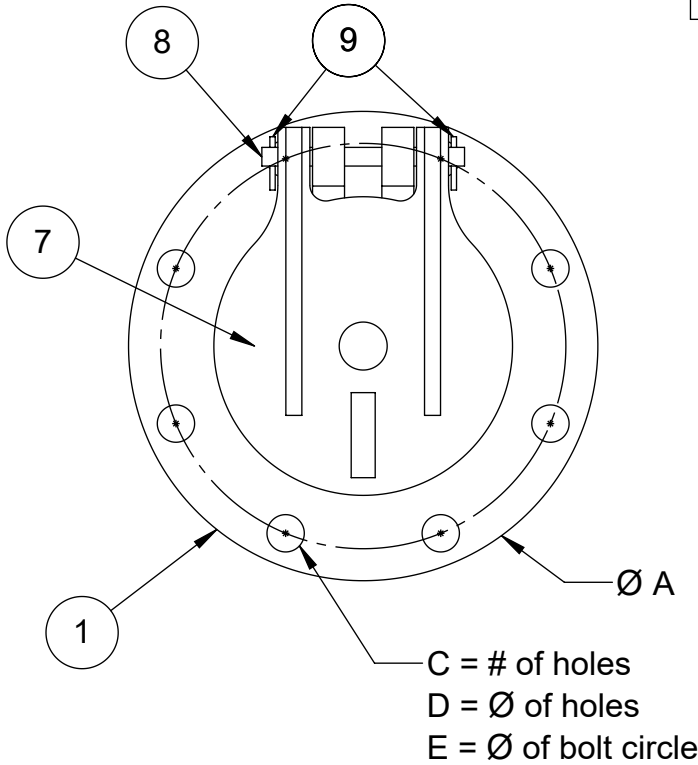


DIMENSIONS ARE IN INCHES

SIZE	3	4	6	8
A	9	9	11	13 1/2
B	4	4	6	8
C	4	8	8	8
D	3/4	3/4	7/8	7/8
E	6	7 1/2	9 1/2	11 3/4
F	5/8	5/8	11/16	3/4
G	3 1/4	3 1/4	3 1/2	4

Item	Description	QTY.	MAT'L
1	Body	1	CI-A126
2	Seat Ring	1	BRZ-B62
3	Resilient Seat	1	BUNA-N
4	Disc Washer	1	304SS
5	Lock Washer	1	304SS
6	3/8-16 Bolt	1	18-8SS
7	Disc	1	CI-A126
8	Hinge Pin	1	304SS
9	Cotter Pin	2	18-8SS



Notes:

- 125# ANSI flange
- Two Part Epoxy Coating
- 3" Flap Valve is prepared for both 3" and 4" 125# ANSI flange mounting pattern
- 10° Offset from verticle