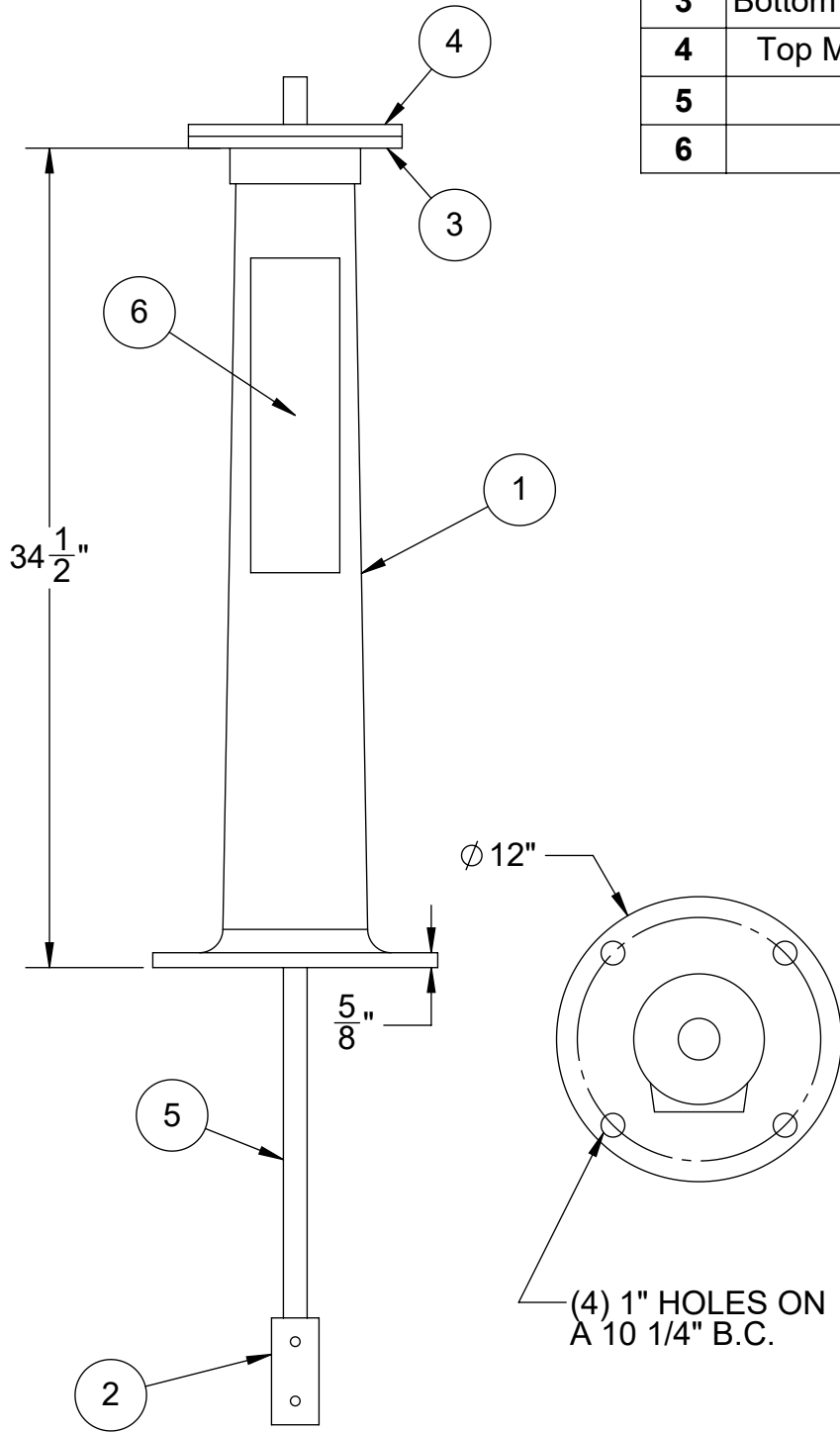


- RISING STEM
- NRS



ITEM	DESCRIPTION	QTY.	MAT'L
1	Floorstand Body	1	DI/SS
2	Sleeve Coupling	1	STEEL/SS
3	Bottom Mounting Plate	1	STEEL/SS
4	Top Mounting Plate	1	STEEL/SS
5	Stem	1	STEEL/SS
6	Cover	1	ALUM

FLOORSTAND BODY

- DI W/STEEL PLATES
- 304SS W/304SS PLATES
- 316SS W/316SS PLATES

STEM

- STEEL
- 304SS
- 316SS

STEM DIAMETER

- 1 1/4"
- 1 1/2"
- OTHER _____

STEM PREP

- KEYWAY SIZE _____
- DRILLED & PINNED
- THREADED

PENN-TROY TO MACHINE DRIVE NUT

- YES
- NO

EXT. STEM DIAMETER

STROKE OF VALVE

(See Note)

ACTUATOR FOOTPRINT REQUIRED

Note: Stroke is only needed for a rising stem valve to determine length of cover tube. If for NRS valve & no floor stand indication, stroke is N/A.

<p>TROY VALVE A DIVISION OF PENN-TROY MANUFACTURING TRUST.</p>	<p>www.TroyValve.com</p>	<p>TITLE: Non-Indicating Flst. for Actuator</p>		<p>DWN. TE</p>
	<p>PHONE: 1-570-297-2125</p>	<p>MAT'L: Varies</p>	<p>PART NO:</p>	<p>PAGE:</p>
	<p>135- DO NOT SCALE DRAWING</p>	<p>DATE: 5/15/2020</p>	<p>A25650_ACT</p>	