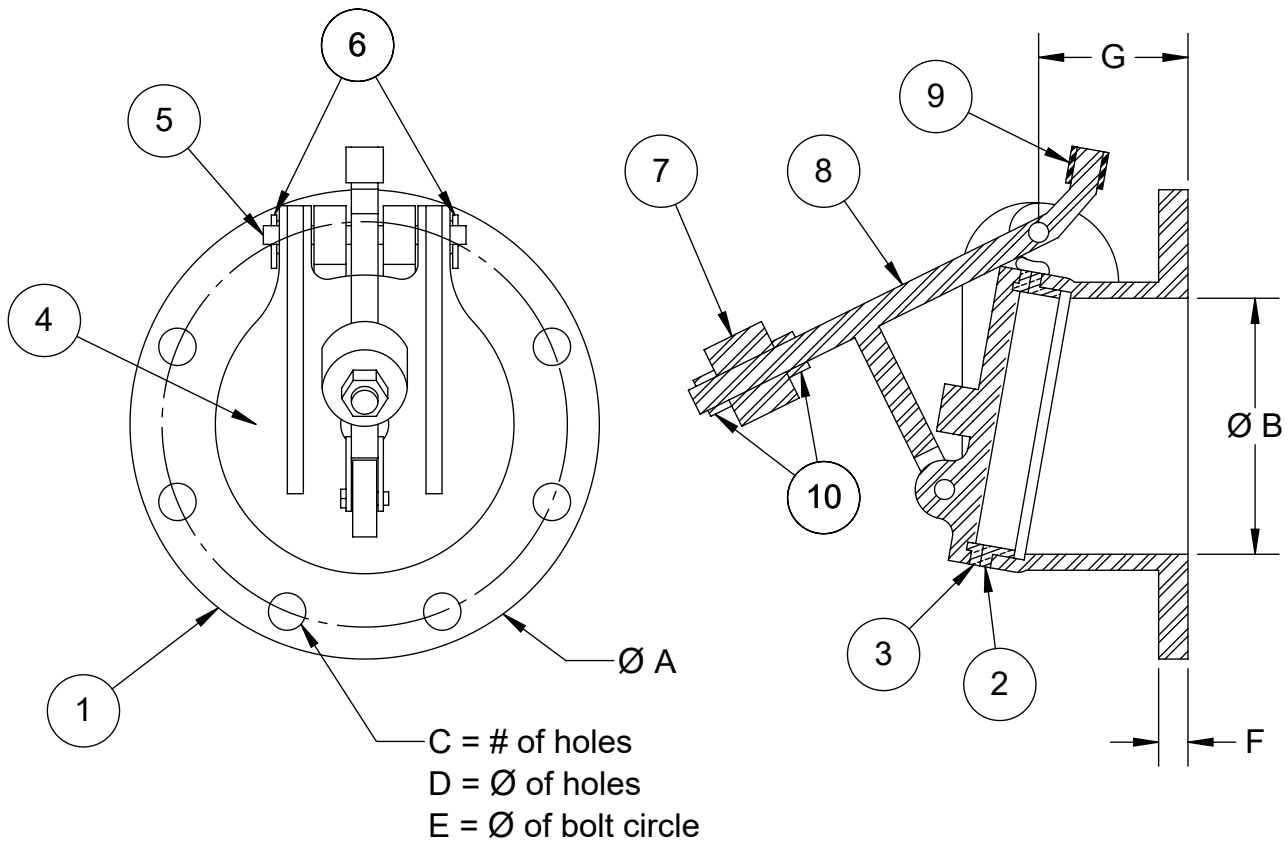


DIMENSIONS ARE IN INCHES

SIZE	3	4	6	8	10	12
A	9	9	11	13 1/2	16	19
B	4	4	6	8	10	12
C	4	8	8	8	12	12
D	3/4	3/4	7/8	7/8	1	1
E	6	7 1/2	9 1/2	11 3/4	14 1/4	17
F	5/8	5/8	11/16	3/4	13/16	7/8
G	3 1/4	3 1/4	3 1/2	4	4 1/2	4 1/2

Item	Description	QTY.	MAT'L
1	Body	1	CI
2	Seat Ring	1	BRZ
3	Disc Ring	1	BRZ
4	Disc	1	CI
5	Hinge Pin	1	SS
6	Cotter Pin	2	SS
7	Weight	1	SS
8	Support Rod	1	SS
9	Stop (See Notes)	1	Rubber
10	Hex Nut	2	SS



Notes:

- 125# ANSI flange
- NSF Approved Two Part Epoxy Coating
- 3" Flap Valve is prepared for both 3" and 4" 125# ANSI flange mounting pattern
- 10° Offset from verticle
- Weight will vary based on size and application of valve
- Rod angle and length will vary based on size and application of valve
- Rubber Stop is:
 - Standard on verticle flange mount.
 - Optional on horizontal flange mount, but may not be available on all applications



www.TroyValve.com

PHONE: 1-570-297-2125

183- DO NOT SCALE DRAWING

TITLE:

3"-12" Weighted Flap Valve

MAT'L: CI

DATE: 9/3/2020

PART NO:

A25406_CW

DWN.

TE

PAGE: